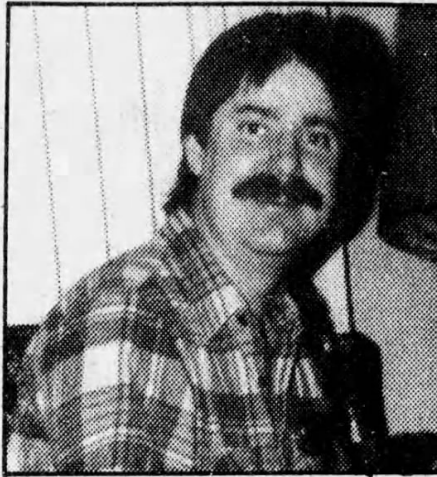


# No arrest yet in Ina murders

Authorities continue to track down leads in last week's murder of a family near Ina, but as of Monday morning no arrests had been made.

Meanwhile, a funeral was held Sunday in Albion for Russell Keith Dardeen, his wife Ruby Elaine and their children, Peter and Casey Elaine. The Rev.



## **Russell Dardeen**

Harold Meriwether of Carmi, who participated in the funeral service, eulogized the family, which he said was "snatched from us prematurely and tragically."

The bodies of Mrs. Dardeen, three-year-old Peter and their newborn daughter Casey Elaine were found Wednesday night inside their trailer in southern Jefferson County. Keith Dardeen's body was found Thursday evening near the Franklin-

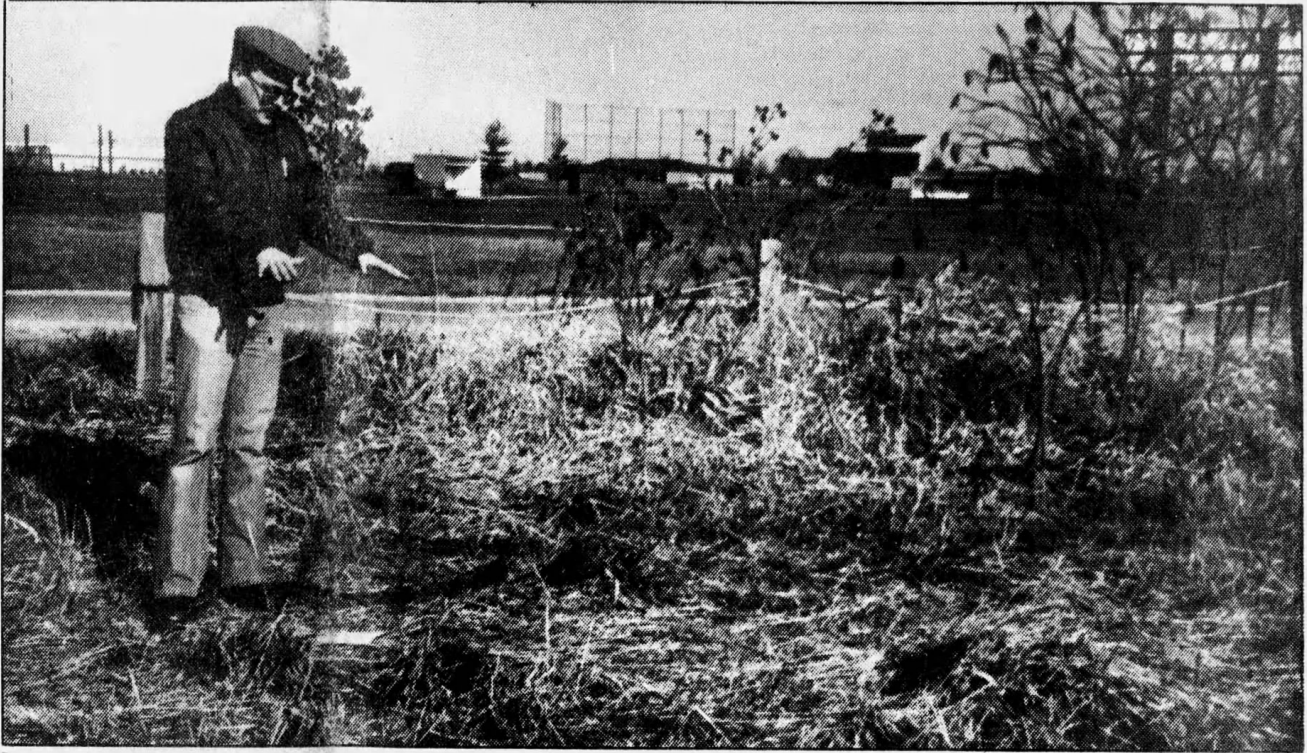
Jefferson county line. All had been beaten with a blunt instrument, which authorities reportedly believe may have been a baseball bat, and Keith Dardeen was also shot two or three times in the head, the **Benton Evening News** reported.

Keith Dardeen was a Mt. Carmel native who worked for the Rend Lake Conservancy District's water system; his wife was from Fairfield but had more recently lived at Albion.

**Fred Smith**, a Division of Criminal Investigation agent and the spokesman for a 25-member task force investigating the murder, said authorities had interviewed more than 200 people in an attempt to develop leads into the slayings.

Dardeen's car was found in Benton, with stains tentatively identified as blood discovered inside. That led some officials to speculate that Dardeen was dead or near death when he was transported in the car from his home to the spot where his body was found.

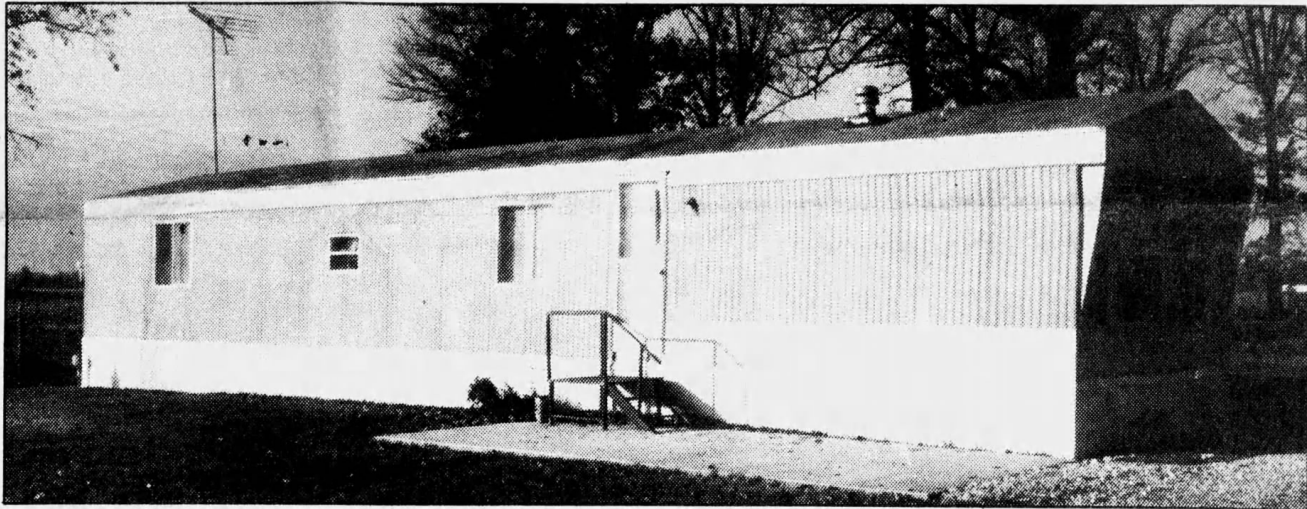
**Joe Browning**, **Evening News** general manager, said early this afternoon that police have reported no new leads in the investigation and are appealing to the public for any information which might lead them to the arrest of an assailant.



THE SCENES of the murders last week of the Dardeen family near Ina; Franklin County Coroner Robert Lewis shows where hunters found the body of Russell Keith Dardeen (above); below is the

mobile home where the bodies of Ruby Elaine Dardeen and the couple's two children were found.

--Benton Evening News photos



Clipped By:  
DDL Moore  
May 1, 2026